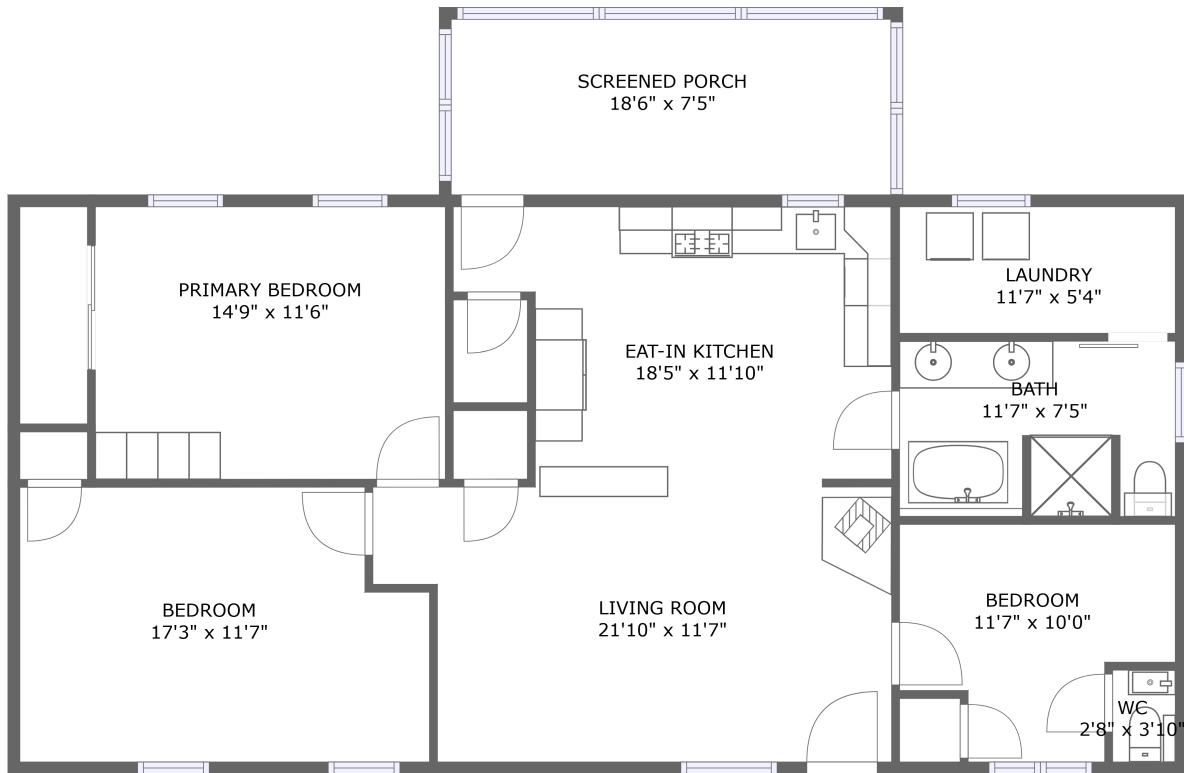






405 Hope Furnace Road, Hope, Rhode Island 02831, United States

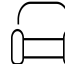


FLOOR 1

Property Summary

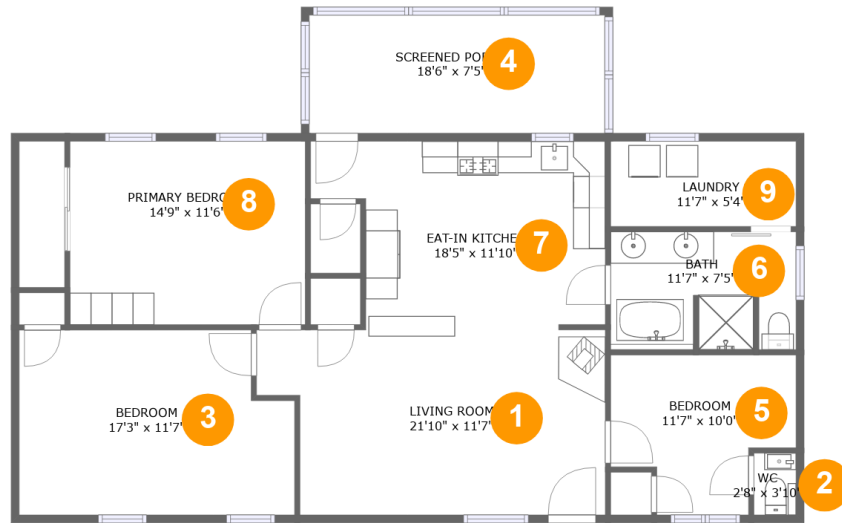
 **0** garages  **3** bedrooms  **1** bathrooms  **1** half baths

 **1** floors

 **1,196** Gross Living Area sqft

 **1,364** total sqft

405 Hope Furnace Road, Hope, Rhode Island 02831, United States



Room Dimensions

Floor 1

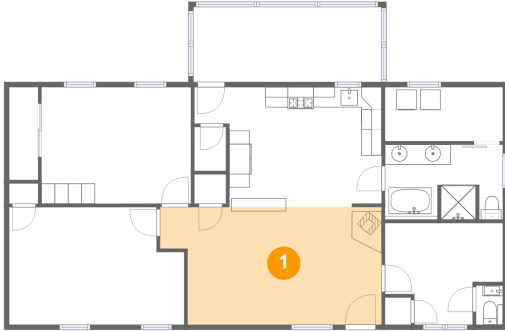
Total sqft: 1364

Living area: 1196

#	Room name	Dimensions	Area (sqft)	Counted as Living Area
1	Living Room	21'10" x 11'7"	232 sq. ft	Yes
2	Wc	2'8" x 3'10"	10 sq. ft	No
3	Bedroom	17'3" x 11'7"	187 sq. ft	Yes
4	Screened Porch	18'6" x 7'5"	137 sq. ft	No
5	Bedroom	11'7" x 10'0"	95 sq. ft	Yes
6	Bath	11'7" x 7'5"	83 sq. ft	Yes
7	Eat-in Kitchen	18'5" x 11'10"	188 sq. ft	Yes
8	Primary Bedroom	14'9" x 11'6"	169 sq. ft	Yes
9	Laundry	11'7" x 5'4"	62 sq. ft	Yes

405 Hope Furnace Road, Hope, Rhode Island 02831, United States

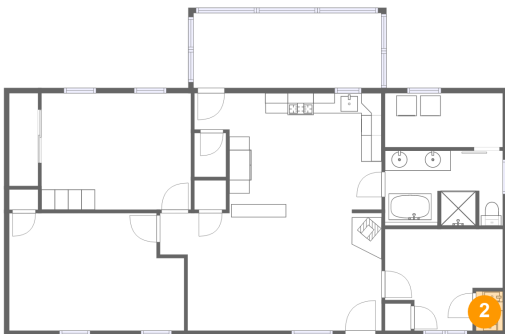
1 Floor 1 - Living Room



Dimensions: 21'10" x 11'7"
Area: 232 sq. ft
Counted as Living Area:
Yes

Heated: Yes
Finished: Yes
Enclosed: Yes
Contiguous:
Yes
Permitted: Yes
Wet Space: No
Addition: No
Conversion: No

2 Floor 1 - Wc

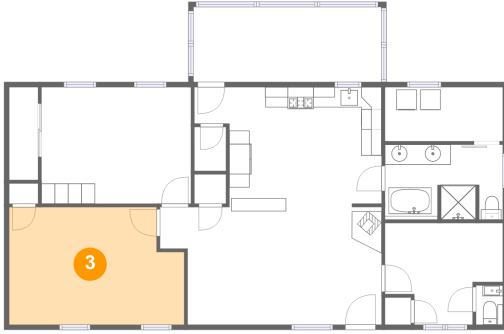


Dimensions: 2'8" x 3'10"
Area: 10 sq. ft
Counted as Living Area: No

Heated: Yes
Finished: Yes
Enclosed: Yes
Contiguous: Yes
Permitted: Yes
Wet Space: Yes
Addition: No
Conversion: No

405 Hope Furnace Road, Hope, Rhode Island 02831, United States

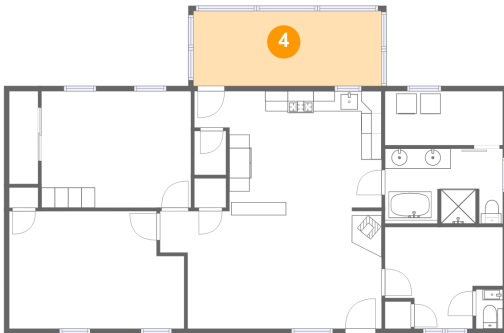
3 Floor 1 - Bedroom



Dimensions: 17'3" x 11'7"
Area: 187 sq. ft
Counted as Living Area:
Yes

Heated: Yes
Finished: Yes
Enclosed: Yes
Contiguous:
Yes
Permitted: Yes
Wet Space: No
Addition: No
Conversion: No

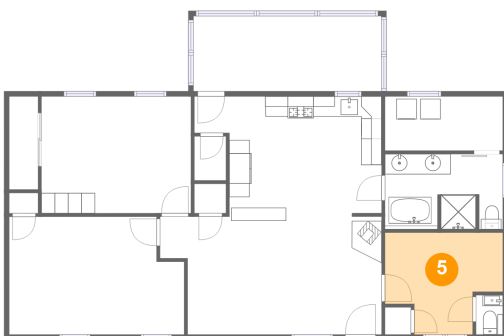
4 Floor 1 - Screened Porch



Dimensions: 18'6" x 7'5"
Area: 137 sq. ft
Counted as Living Area: No

Heated: No
Finished: Yes
Enclosed: No
Contiguous: Yes
Permitted: Yes
Wet Space: No
Addition: No
Conversion: No

5 Floor 1 - Bedroom

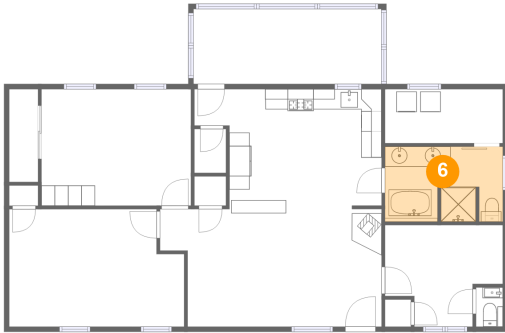


Dimensions: 11'7" x 10'0"
Area: 95 sq. ft
Counted as Living Area:
Yes

Heated: Yes
Finished: Yes
Enclosed: Yes
Contiguous:
Yes
Permitted: Yes
Wet Space: No
Addition: No
Conversion: No

405 Hope Furnace Road, Hope, Rhode Island 02831, United States

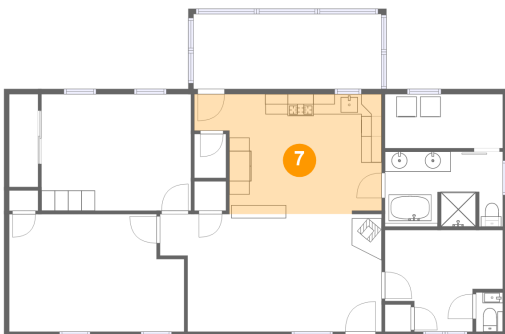
6 Floor 1 - Bath



Dimensions: 11'7" x 7'5"
Area: 83 sq. ft
Counted as Living Area:
Yes

Heated: Yes
Finished: Yes
Enclosed: Yes
Contiguous:
Yes
Permitted: Yes
Wet Space: Yes
Addition: No
Conversion: No

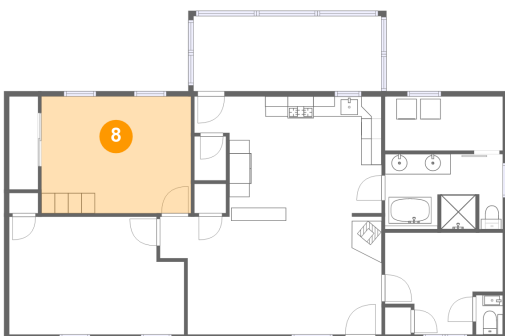
7 Floor 1 - Eat-in Kitchen



Dimensions: 18'5" x 11'10"
Area: 188 sq. ft
Counted as Living Area:
Yes

Heated: Yes
Finished: Yes
Enclosed: Yes
Contiguous:
Yes
Permitted: Yes
Wet Space: No
Addition: No
Conversion: No

8 Floor 1 - Primary Bedroom

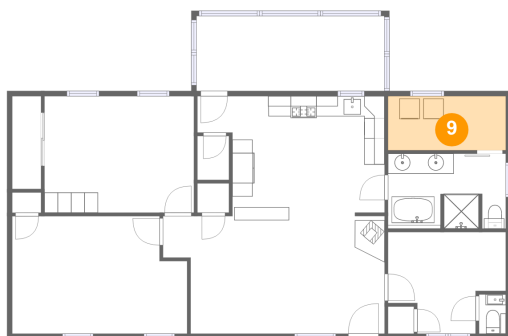


Dimensions: 14'9" x 11'6"
Area: 169 sq. ft
Counted as Living Area:
Yes

Heated: Yes
Finished: Yes
Enclosed: Yes
Contiguous:
Yes
Permitted: Yes
Wet Space: No
Addition: No
Conversion: No

405 Hope Furnace Road, Hope, Rhode Island 02831, United States

9 Floor 1 - Laundry



Dimensions: 11'7" x 5'4"
Area: 62 sq. ft
Counted as Living Area:
Yes

Heated: Yes
Finished: Yes
Enclosed: Yes
Contiguous:
Yes
Permitted: Yes
Wet Space: No
Addition: No
Conversion: No